



CAMPING/CARAVAN

2021/2022

with the right power supply



RANGE

- 3-4** Cable reels
- 5** Bag for cable reels
- 6-8** Extensions
- 9** Bag for extensions
- 10-11** Adapter cords
- 12-13** International adapter cords
- 14** Camping accessories
- 15** Gas detectors
- 16-17** Energy meters
- 18-19** Power combination units
- 20** Cable boxes
- 21** Multi socket outlets
- 22-23** STECKY power combination units
- 24** CEE plugs
- 25** CEE connectors
- 26-27** Power supply inlets
- 28-30** Flanged sockets
- 31** Protective devices and cables
- 31** Power cords
- 32** Caravan adapters
- 33** Caravan adapter cords
- 34** Caravan circuit tester
- 35** Camping lighting

NO POWER IN YOUR CARAVAN?

If the **red LED** at the plug and connector is glowing, the **cable is live**.

Shorten the troublesome search for the error with a glance at our voltage indicator!



Progress for greater camping pleasure

You can purchase many camping products with our innovative 'powerlight' plugs and connectors with voltage indicator right now.

Look for the powerlight symbol.

powerlight CEE plug
230 V, 16 A, 3-pole
Art. no. 61486
Page 24



powerlight CEE connector
230 V, 16 A, 3-pole
Art. no. 61487
Page 25



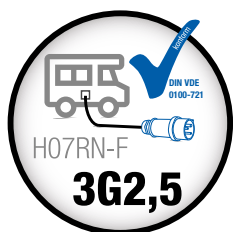
as[®]
Schwabe
TechnikProdukte

CAMPING

The right power supply with as - Schwabe



If you want to spend your camping holiday without nasty surprises, check your equipment for completeness and functionality before departure. The electrical equipment is one of the most important and must meet the campsites standards. This catalogue shows the authorized products (✓).



STANDARDS

Electrical standards for power supply on Camping sites, Campervans, motorhomes or mobile homes have to be respected. According to DIN standard VDE 0100-721, heavy-duty rubber power cables of **type H07RN-F** or a higher quality with a **cable cross-section of 2.5 mm²** (3G2.5) are required. Further, the permitted **maximum length of 25 m** cord **plus** an **adapter cord of 1.5 m**, if necessary, must not be exceeded.

These requirements are an integral part of all **camp site regulations**. If you fail to comply, the camp site owner may ask you to **rent** or **purchase** a cable on site. If you refuse the camp site operator's request, **you may be denied access to electricity**. If you manage to connect to the feeding current without authorisation, your action may be liable to prosecution and you would normally be **expelled** from the camp site.

Compliance with regulations is essential for your insurance. For example, cable cross-sections that are too small can lead to fire as a result of an excessive electricity load. If damage to your mobile home or the camp site results from **illegal cables**, your **insurance protection will be rendered void** and you will be liable for the damage and responsible for any costs.



OUR RECOMMENDATION

Considering the **safety aspects** related to electric current, the use of electrical products with **cable lengths of less than 1.5 m** is not recommended. Such cable lengths make it possible to connect extension cables to wall-mounted socket outlets or power supply inlets and **place the cable with connector on the ground beneath the vehicle, for example**.

The advantage is that any traction effort both on the socket and on the mobile connection is avoided. In addition, the power supply inlet is not loaded. Indeed, tensile stress should always be avoided on these two connections, since **in the worst case**, loose contact connections **can cause** socket fires. **Short circuits** can also **damage** the connected devices. If you want to be on the safe side, consider our recommendation and only use products with a minimum cable length of 1.5 m.

Camping cable reels


Technical data

- Reel body made from robust, shatterproof special plastic
- With thermo switch and cable guide
- Cable clip to fix the cable on the housing
- With heavy-duty rubber power cable H07RN-F 3G2.5
- Suitable for permanent outdoor use
- Tested in accordance with EN 61242, DIN VDE 0620-2-1, DIN EN 50525-2, IEC 60309
- **IP44**: protected against foreign bodies and splash-proof



Xperts camping cable reel with 'powerlight' voltage indicator



- With stable, shock-absorbing **X** double-tube frame with star-grip brake, especially suitable for uneven ground
- Frame with ergonomic non-slip 2-component handle
- CEE plug 230 V, 16 A, 3-pole with 'powerlight' voltage indicator
- 2x shock-proof socket outlets 230 V with safety flap lids, splash-proof  and 1x CEE socket with flap lid 230 V, 16 A, 3-pole

Version with CEE plug	Ø mm	PU	EAN	Art. no.
25 m H07RN-F 3G2.5	285	1/48	4011160221767	22176

Camping cable reel with 'powerlight' voltage indicator



- Shock-absorbing, stable, galvanised foot frame with parking brake
- Ergonomic handle
- CEE plug 230 V, 16 A, 3-pole with 'powerlight' voltage indicator
- 2x shock-proof socket outlets 230 V with safety flap lids, splash-proof  and 1x CEE socket with flap lid 230 V, 16 A, 3-pole


Version with CEE plug	Ø mm	PU	EAN	Art. no.
25 m H07RN-F 3G2.5	285	1/60	4011160101762	10176



Bag for cable reel
Art. no. 12279, page 5

Camping cable reel



- Shock-absorbing, stable, galvanised foot frame with parking brake
- Ergonomic handle
- Shock-proof plug 230 V, 16 A
- 2x shock-proof socket outlets 230 V with safety flap lids, splash-proof  and 1x CEE socket with flap lid 230 V, 16 A, 3-pole

Version with shock-proof plug	Ø mm	PU	EAN	Art. no.
25 m H07RN-F 3G2.5	285	1/60	4011160101731	10173

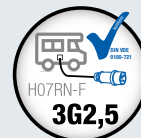


Bag for cable reel
Art. no. 12279, page 5

Camping cable reels

Technical data

- Reel body made from robust, shatter-proof special plastic with ergonomic handle
- Shock-absorbing, stable, galvanised foot frame with parking brake
- With thermo switch and cable guide
- Cable clip to fix the cable on the housing
- With heavy-duty rubber power cable H07RN-F 3G2.5
- Suitable for permanent outdoor use
- Tested in accordance with EN 61242, DIN VDE 0620-2-1, DIN EN 50525-2, IEC 60309
- **IP44:** protected against foreign bodies and splash-proof



Camping extension reel with 'powerlight' voltage indicator



- CEE plug 230 V, 16 A, 3-pole with 'powerlight' voltage indicator
- 1.5 m power cord with 1x CEE connector with flap lid 230 V, 16 A, 3-pole with 'powerlight' voltage indicator

Version with CEE plug	Ø mm	PU	EAN	Art. no.
25 m H07RN-F 3G2.5	285	1/60	4011160122705	12270



Bag for cable reel
Art. no. 12279, page 5



- CEE plug 230 V, 16 A, 3-pole with 'powerlight' voltage indicator
- 1.5 m power cord with CEE angled connector with flap lid (230 V, 16 A, 3-pole) and shock-proof socket outlet with flap lid (230 V, 16 A)

Version with CEE plug	Ø mm	PU	EAN	Art. no.
25 m H07RN-F 3G2.5	285	1/60	4011160122743	12274




Bag for cable reel
Art. no. 12279, page 5



Cable reel



- Shock-proof plug 230 V, 16 A
- 3x shock-proof socket outlets, splash-proof 

Version with shock-proof plug	Ø mm	PU	EAN	Art. no.
25 m H07RN-F 3G2.5	285	1/60	4011160102318	10231



Bag for cable reel
Art. no. 12279, page 5

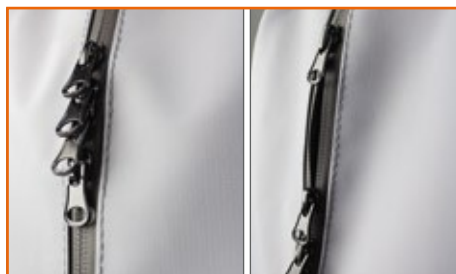


The all-weather protective bag against dirt and rain!

- Made of resistant, dust- and splash-proof outdoor material
- Easy-care outer material, easy to wash
- Zipper with dust- and splash-proof protective coating
- 4 zipper sliders allow the setting of individual openings
- Practical strap with a buckle clip on the top
- Easy packing of the cable reel as the bag can be opened completely
- Pre-punched slots on both sides to pull the cables through
- Pocket size: height 390 mm, width 330 mm, depth 210 mm
- Intended for permanent outdoor use
- Suitable for camping cable reels with the article no. 10173, 10176, 10231, 12270, 12274

Version	Colour	PU	EAN	Art. no.
Bag for camping cable reels	Grey	1	4011160122798	12279

Details overview:



Zipper with all-weather-resistant protective coating and four sliders.



Carrying strap with buckle clip for easy transport.



Rain protection tabs over **pre-punched opening slots** for inserting the power cord.



Easy packing of the cable reel with 270° all-around zipper at the front and back of the bag.

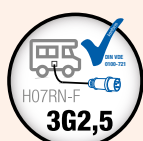


Simple connection of loads thanks to four zipper sliders.



Practical cable openings on both sides of the bag for inserting cables.

CAMPING DUO



Set consists of:

- 1x CEE camping cable reel (Art. no. 10176)
25 m rubber power cable H07RN-F 3G2,5
with CEE plug with 'powerlight' voltage indicator,
1 CEE socket outlet and 2 shock-proof socket outlets
with safety flap lids
- 1x CEE extension 1.5m H07RN-F 3G2,5 (Art. no. 61489)
with CEE plug and CEE connector with flap lid

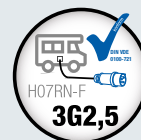
**BEST
SELLER**

EAN: 4011160197000
Art. no. 19700

CEE extensions

Technical data

- With heavy-duty rubber power cable H07RN-F 3G2.5
- Tested in accordance with DIN VDE 0620-2-1, IEC 60309, DIN EN 50525-2
- **IP44:** protected against foreign bodies and splash-proof



CEE extension cable with 'powerlight' voltage indicator



- 1x CEE plug 230 V, 16 A, 3-pole with 'powerlight' voltage indicator
- 1x CEE angled connector with flap lid 230 V, 16 A, 3-pole and 1x shock-proof socket outlet with flap lid 230 V, 16 A (IP44)

Cable length	PU	EAN	Art. no.
1.5 m H07RN-F 3G2.5	1	4011160614033	61403

CEE extensions



- 1x CEE plug 230 V, 16 A, 3-pole
- 1x CEE angled connector with flap lid 230 V, 16 A, 3-pole and 1x shock-proof socket outlet with flap lid 230 V, 16 A (IP44)



Cable length	PU	EAN	Art. no.
1.5 m H07RN-F 3G2.5	1	4011160614828	61482

CEE extensions with PRCD safety switch



- Extension with RCD protection 30mA
- RCD with undervoltage release as protection against electric voltage
- 1x CEE plug 230 V, 16 A, 3-pole
- 1x CEE connector 230 V, 16 A, 3-pole with flap lid

Cable length	PU	EAN	Art. no.
2x 1.5 m H07RN-F 3G2.5	1	4011160452246	45224

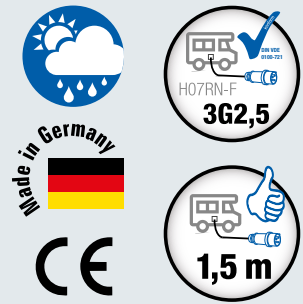


Bag for extension
Art. no. 12278, page 9

CEE extensions

Technical data

- With heavy-duty rubber power cable H07RN-F 3G2.5
- Tested in accordance with DIN VDE 0620-2-1, IEC 60309, DIN EN 50525-2
- **IP44**: protected against foreign bodies and splash-proof



CEE extension cables with 'powerlight' voltage indicator



- 1x CEE plug 230 V, 16 A, 3-pole with 'powerlight' voltage indicator
- 1x CEE connector with flap lid 230 V, 16 A, 3-pole with 'powerlight' voltage indicator

Cable length	PU	EAN	Art. no.
1.5 m H07RN-F 3G2.5	1	4011160614026	61402
5 m H07RN-F 3G2.5	1	4011160614019	61401
10 m H07RN-F 3G2.5	1	4011160614071	61407
25 m H07RN-F 3G2.5	1	4011160614095	61409



Bag for extension
Art. no. 12278, page 9

CEE extensions



- 1x CEE plug 230 V, 16 A, 3-pole
- 1x CEE connector 230 V, 16 A, 3-pole with flap lid

Cable length	PU	EAN	Art. no.
1.5 m H07RN-F 3G2.5	1	4011160614897	61489
5 m H07RN-F 3G2.5	1	4011160613708	61370
10 m H07RN-F 3G2.5	1	4011160604775	60477
25 m H07RN-F 3G2.5	1	4011160604799	60479



Bag for extension
Art. no. 12278, page 9

Finger weg! Das gehört Carlo Camper!
Camping, Cars und Caravan: Ihr Ausstatter für alle Fälle
Camping-Shop Musterstraße 10 12345 Musterstadt Tel.01234/56789
Besuchen Sie uns bald wieder: Campingplatz Kuckucksnest im Schwarzwald

Your camping equipment with individually labelled cables

Do you want your **cable reels or extensions** to advertise your company when being used on the campsite? With our cable labelling service, they can do just that.

We can print the cables for your required products to meet your exact specifications. Whether it's the **name and address of a campsite or a link to your website** – labelling will increase your advertising impact and ensure more visitors. A labelled cable also has the advantage of raising the **psychological barrier to theft** and thus protects your property. And **visitors will no longer mistake** your property **for theirs**.

Take advantage of our cable labelling service now.

Here's how it works:

Select the products from this catalogue that you would like us to label for you. The **minimum purchase amount** is **100 m cable length**, consisting of a combination of any lengths, e.g.:

- Four cable reels each containing 25 m of cable
- Ten extensions each 10 m in length
- Two cable reels each containing 25 m of cable and five extensions each 10 m in length

We will use **silver grey** printing ink to print your cable with the desired labelling. The inks we use have a high mechanical durability and are largely abrasion-resistant. We deliver your printed cables just a few days following printing approval.



Order your customised cable labelling now!
Art. no. 61000 (per meter)



The all-weather protective bag against dirt and rain!

- Protects extensions against dirt and rain
- Made of resistant, dust- and splash-proof outdoor material
- Easy-care outer material, easy to wash
- Zip with all-weather-resistant protective coating
- Easy packing of the extension as the bag can be opened completely
- Pocket size: diameter 360 mm , depth 110 mm
- Bag with long and elastic handle
- Suitable for permanent outdoor use and easy to wash
- Suitable for extension cables up to 25 m long 3G2.5

	Colour	PU	EAN	Art. no.
Bag for extensions	Grey	1	4011160122781	12278

Details overview:



Stable carrying strap for easy transport.



Zipper with dust- and splash-proof protective coating.



Wide opening for easy stowing of extension cable.

CAMPING SET

Set consists of:

- **1x protective bag** for extensions (Art. no. 12278)
- **1x extension 25 m H07RN-F 3G2.5** (Art. no. 60479) with CEE plug and CEE connector
- **1x adapter cord 1.5m H07RN-F 3G2.5** (Art. no. 60486) with shock-proof plug 2 PE/230 V/16 A and CEE connector
- **1x adapter cord 1.5m H07RN-F 3G2.5** (Art. no. 60488) with CEE-plug 230 V/16 A/3-pole and shock-proof connector 2 PE/230 V/16 A
- **1x LED-torch XT1** (Art.no. 42804)

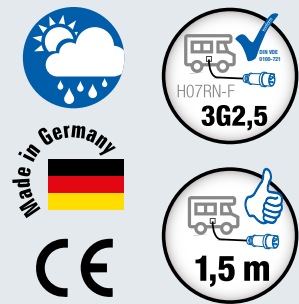
EAN: 4011160197017
Art. no. 19701



CEE adapter cords

Technical data

- With heavy-duty rubber power cable H07RN-F 3G2.5
- Tested in accordance with DIN VDE 0620-2-1, IEC 60309, DIN EN 50525-2
- **IP44:** protected against foreign bodies and splash-proof



CEE adapter cords with 'powerlight' voltage indicator



- 1x shock-proof plug 230 V, 16 A
- 1x CEE connector with flap lid 230 V, 16 A, 3-pole with 'powerlight' voltage indicator



Cable length	PU	EAN	Art. no.
1.5 m H07RN-F 3G2.5	1	4011160614064	61406



- 1x CEE plug 230 V, 16 A, 3-pole with 'powerlight' voltage indicator
- 1x shock-proof connector with protective cap 230 V, 16 A



Cable length	PU	EAN	Art. no.
1.5 m H07RN-F 3G2.5	1	4011160614088	61408

CEE adapter cords



- 1x shock-proof plug 230 V, 16 A
- 1x CEE connector 230 V, 16 A, 3-pole with flap lid

Cable length	PU	EAN	Art. no.
1.5 m H07RN-F 3G2.5	1	4011160604867	60486



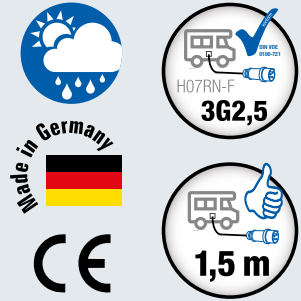
- 1x CEE plug 230 V, 16 A, 3-pole
- 1x shock-proof connector with protective cap 230 V, 16 A

Cable length	PU	EAN	Art. no.
1.5 m H07RN-F 3G2.5	1	4011160604881	60488

CEE adapter cords

Technical data

- With heavy-duty rubber power cable H07RN-F 3G2.5
- Tested in accordance with DIN VDE 0620-2-1, IEC 60309, DIN EN 50525-2
- **IP44:** protected against foreign bodies and splash-proof



CEE adapter cords



- 1x shock-proof plug 230 V, 16 A
- 1x CEE connector 230 V, 16 A, 3-pole with flap lid

Cable length	PU	EAN	Art. no.
1.5 m H07RN-F 3G2.5	1	4011160614835	61483



- 1x shock-proof plug 230 V, 16 A
- 1x CEE angled connector with flap lid 230 V, 16 A, 3-pole and 1x shock-proof socket outlet with flap lid 230 V, 16 A

Cable length	PU	EAN	Art. no.
1.5 m H07RN-F 3G2.5	1	4011160604836	60483



- 1x CEE plug 400 V, 16 A, 5-pole
- 1x CEE connector 230 V, 16 A, 3-pole with flap lid

Cable length	PU	EAN	Art. no.
1.5 m H07RN-F 3G2.5	1	4011160613913	61391

British standard



- With 1.5 m PVC cable H05VV-F 3G1.5

Version	PU	EAN	Art. no.
British standard plug BS1363 (250 V, 13 A, 3-pole) and CEE connector with flap lid (230 V, 16 A, 3-pole)	1	4059948002863	660486
CEE plug (230 V, 16 A, 3-pole) and British standard connector BS1363 (250 V, 13 A, 3-pole)	1	4059948002870	660488

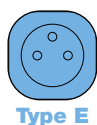
Swiss standard



- With 1.5 m heavy-duty rubber power cable H07RN-F 3G2.5

Version	PU	EAN	Art. no.
SEV plug type 12 (230 V, 10 A, 3pole) and CEE connector with flap lid 230 V, 16 A, 3-pole, max. load 10 A)	1	4059948003990	760486
CEE plug (230 V, 16 A, 3-pole) and SEV connector type 23 with safety lid (230 V, 16 A, 3-pole)	1	4059948004393	761488

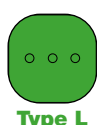
French standard



- With 1.5 m heavy-duty rubber power cable H07RN-F 3G2.5

Version	PU	EAN	Art. no.
NF plug (230 V, 16 A) and CEE connector with flap lid (230 V, 16 A, 3-pole)	1	4011160604867	60486
CEE plug (230 V, 16 A, 3-pole) and NF connector type 23 with safety lid (230 V, 16 A, 2 PE)	1	4059948000296	860488

Italian standard



- With 1.5 m heavy-duty rubber power cable H07RN-F 3G1.5

Version	PU	EAN	Art. no.
Italian plug type L (16 A) and CEE connector with flap lid (230 V, 16 A, 3-pole)	1	4059948002979	360486
CEE plug (230 V, 16 A, 3-pole) and Italian industrial outlet type L (230 V, 10-16 A)	1	4059948002986	360488



Country overview per connector standard

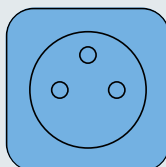
As some countries use several connector systems, we cannot present a binding overview. Please inform yourself in detail which type you need before you start your journey.

Type B



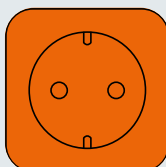
Ecuador
Japan
Canada
Colombia
Cuba
Mexico
Panama
Philippines
Taiwan
Thailand
USA
Venezuela

Type E



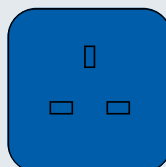
Belgium
France
Morocco
Monaco
Poland
Slovakia
Czech Republic
Tunisia

Type F



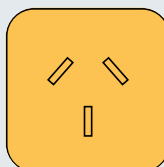
Bulgaria
Denmark
Germany
Finland
Greece
Croatia
Netherlands
Norway
Austria
Portugal
Russia
Sweden
Spain
Turkey

Type G



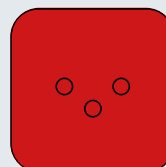
Abu Dhabi
Dubai
Great Britain
Gambia
Ghana
Hong Kong
India
Iraq
Ireland
Northern Ireland
Scotland
Singapore
Wales
Cyprus

Type I



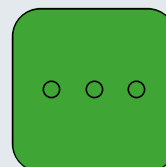
Argentina
Australia
China
New Zealand
Samoa
Uruguay

Type J



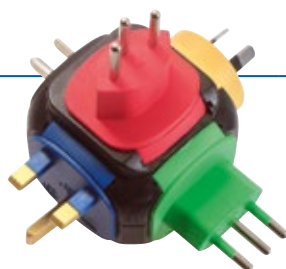
Switzerland
Liechtenstein

Type L



Ethiopia
Chile
Italia
San Marino
Vatican City

Travel adapter STECKY



For use in more than 100 countries



Type B



Type G



Type I



Type J



Type L

Versions for indoor household appliances

- 5 easily interchangeable country-specific modules
- For safe connection of different plugs
- With ground wire bracket and space-saving travel case

PU

EAN

Art. no.

1

4011160902512

90251

CEE safety box



- Reliable impact protection and moisture protection for plugs and connectors
- Impossible for plugs and connectors to be accidentally disconnected
- With a solid lock and three keys
- According to its green colour, the safety box is not visible in hedges or grass
- Length: 360 mm, Ø 110 mm
- **IP44**: protected against foreign bodies and splash-proof

Version	PU	EAN	Art. no.
Safety box for CEE plugs 230 V, 16 A, 3-pole	1	4011160487088	48708

Cable winder



- Cable winder for keeping your extensions or cords neat and tidy when storing them
- For max. 15 m heavy-duty rubber cable H07RN-F 3G2.5
- Provided with two loops
- Includes a plug storage space for the most common plugs, e.g., shock-proof plug and CEE plug 230 V



Version	Colour	PU	EAN	Art. no.
Cable winder for max. 15 m H07RN-F 3G2.5	Blue	1	4011160487095	48709

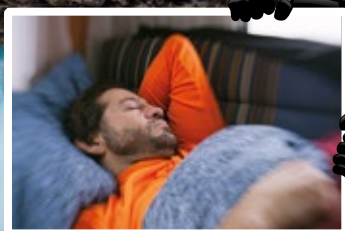
Battery adapter with cigarette lighter connector



- Allows the connection of all types of equipment through the cigarette lighter directly with the battery (12 V or 24 V)
- 1 m 2x0,75 mm² insulated cables with coloured positive and negative battery terminals

Version	PU	EAN	Art. no.
Battery adapter with cigarette lighter connector	1	4011160423055	42305

NARCOTIC GAS DETECTOR FOR GREATER SAFETY WHEN CAMPING



PROTECT YOURSELF AGAINST

- **Anaesthetisation**
by thieves with narcotic gas while you are sleeping.
- **Poisoning**
from gas leaking from the gas bottle for the hob

' ALARM ' NARCOTIC GAS • PROPANE GAS • BUTANE GAS ' ALARM '



Narcotic gas detector H-AL 8300

NEW



- Gas detector provides a warning of propane, butane, and ether (narcotic gases)
- Suitable for use in caravans and lorry driver cabs
- Installation from 70-110 cm above the floor
- With LED function display: Power (green), Error (yellow), Alarm (red)
- With electrochemical sensor
- Signal tone with additional flashing LED
- Connection via USB-C cable (included)
- **IP20**: for indoor use

Version	PU	EAN	Art. no.
H-AL 8300	1	4011160904189	90418



MIXO ENERGY METERS

CONTROL OF POWER CONSUMPTION

To avoid bad surprises at the end of your camping trip, always check your power consumption by using the MIXO energy meter.



EASY INSTALLATION

To correctly record the measured values, connect the energy meter between the power supply and your mobile home. The energy measurement will start as soon as you switch on a device.

ANALOG DISPLAY: MID-COMPLIANT

MIXO energy meters are only fitted with analog displays, which are compliant with specification of MID, the calibration authority. MIXO energy meters guarantee the manipulation-proof acquisition of measured values.

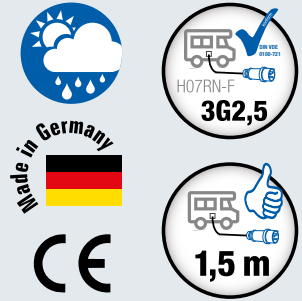
ELECTRICITY BILLING? NO PROBLEM WITH MIXO ENERGY METERS!

In accordance with Sect. 31 of the German Measurement and Calibration Act (MessEG), **only compliant meters may be used for electricity billing**. **MIXO energy meters** comply with the directives of the European Measuring Instruments Directive MID and are approved for **electricity billing**. The use of **non-compliant energy meters** for billing constitutes an **offence** punishable by a fine of up to EUR 50,000 (Sect. 60).

MIXO energy meters

Technical data

- With 2x 1.5m heavy-duty rubber power cable H07RN-F 3G2.5
- Tested in accordance with DIN EN 50525-2, DIN VDE 0620-2-1, IEC 60309, IEC EN 50470-1
- **IP44:** Resistant to foreign bodies and splash-proof, suitable for outdoor use



With analog display

MIXO energy meters

- Housing made from shatterproof special plastic
- Integrated energy meter with analog display, **MID-compliant** 2014/32/EU
- Analogue display 5+1 digits, readable at any time
- Display for a maximum of 99.999,9 kWh, non-resettable
- Operating temperature from -25°C to +55°C

Fig.	Version	Cable length	PU	EAN	Art. no.
1	With shock-proof plug and shock-proof connector	2x 1.5 m	1	4011160617478	61747
2	With CEE plug and CEE connector	2x 1.5 m	1	4011160617485	61748



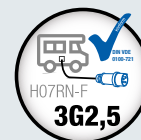
MIXO CEE **power combination units**

The solution when
there are not enough connections.

MIXO CEE combination units

Technical data

- Mobile distributors, space-saving and universally applicable
- Housing made from shatterproof special plastic
- Max. load 16 A / approx. 3.5 kW
- Tested in accordance with DIN VDE 0620-2-1, IEC 60309, DIN EN 50525-2
- **IP44**: protected against foreign bodies and splash-proof



MIXO CEE power combination units



MIXO WESER

Version	EAN	Art. no.
3x shock-proof socket outlets 230 V, 16 A 1x CEE plug 230 V, 16 A, 3-pole	4011160604980	60498



BEST
SELLER

MIXO EMS

- With 1.5 m power cord H07RN-F 3G2.5

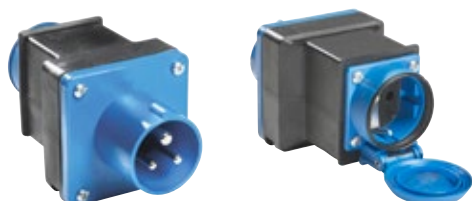
Version	EAN	Art. no.
1x shock-proof socket outlet 230 V, 16 A 2x CEE sockets 230 V, 16 A, 3-pole 1x CEE plug 230 V, 16 A, 3-pole	4011160604966	60496



MIXO SAALE

- With 1.5 m cable H07RN-F 3G2.5

Version	EAN	Art. no.
2x shock-proof socket outlets 230 V, 16 A 2x CEE sockets 230 V, 16 A, 3-pole 1x CEE plug 230 V, 16 A, 3-pole	4011160604973	60497



CEE caravan adapter

Version	EAN	Art. no.
1x shock-proof socket outlet 230 V, 16 A 1x CEE plug 230 V, 16 A, 3-pole	4011160604942	60494

Cable boxes



Technical data

- Cable boxes made from sturdy, impact-resistant plastic in a modern design
- With practical handle
- Thermo switch included
- With PVC cable H05VV-F 3G1.5
- For easy winding in and out
- Tested in accordance with: EN 61242, DIN VDE 0620-2-1, DIN EN 50525-2
- **IP20**: indoor use

Cable box for indoor use



- Housing with foldable crank
- With shock-proof angle plug 230 V, 16 A
- With 4 shock-proof socket outlets with increased touch protection

Version	Colour	EAN	Art. no.
5 m H05VV-F 3G1.5	Black/grey	4011160160806	16080
5 m H05VV-F 3G1.5	Black/blue	4011160160813	16081



- With shock-proof angle plug 230 V, 16 A
- With 4 shock-proof socket outlets with increased touch protection

Version	Colour	EAN	Art. no.
10 m H05VV-F 3G1.5	Black/grey	4011160160868	16086
10 m H05VV-F 3G1.5	Black/blue	4011160160943	16094

CAMPING CABLE REELS

From page 3



Multi socket outlets



Technical data

- With illuminated on/off switch and self-locking safety flap lids
- With increased touch protection
- Suitable for wall attachment
- With heavy-duty rubber power cable H07RN-F 3G1.5
- Tested in accordance with DIN VDE 0620-2-1, IEC 60309, RN-F tested in accordance with DIN EN 50525-2
- **IP44**: protected against foreign bodies and splash-proof

Multiple socket outlets with switch



- With **shock-proof plug** 230 V, 16 A

Version	Cable	EAN	Art. no.
3-way multi socket outlet	1.5 m	4011160386039	38603
5-way multi socket outlet	4.5 m	4011160386053	38605



- With **CEE plug** 230 V, 16 A, 3-pole

Version	Cable	EAN	Art. no.
3-way multi socket outlet	1.5 m	4011160386183	38618
5-way multi socket outlet	4.5 m	4011160386190	38619

Details overview:



All models with **shock-proof socket outlets** with safety flap lids and illuminated, splash-proof **on/off switch**. There are also pre-drilled holes for attachment.

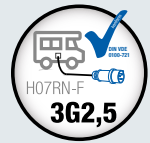


No mutual obstruction between the connected plugs thanks to the **45° rotated socket inserts**.

STECKY CEE power combination units

Technical data

- Robust housing made from shatterproof special plastic
- With large, ergonomic carry handle
- Tested in accordance with DIN VDE 0620-2-1, IEC 60309, EN 61439-4, DIN EN 50525-2
- **IP44**: resistant to foreign bodies and splash-proof



STECKY 11

- 2.5 m H07RN-F 5G2.5 heavy-duty rubber power cable with CEE plug 400 V, 16 A
- Dimensions (W x H x D): 230 x 417 x 220 mm
- No protective device

Input 16 A, approx. 11 kW

CEE plug 400 V, 16 A, 5-pole



Output

4x shock-proof socket outlets 230 V, 16 A
(2 per phase)

2x CEE sockets 400 V, 16 A, 5-pole



EAN

4011160609602

Art. no.

60960



STECKY 14

- 2.5 m H07RN-F 3G2.5 heavy-duty rubber power cable with CEE plug 230 V, 16 A
- Dimensions (W x H x D): 230 x 417 x 220 mm
- No protective device

**BEST
SELLER**

Input 16 A, approx. 3.5 kW

CEE plug 230 V, 16 A, 3-pole



Output

4x shock-proof socket outlets 230 V, 16 A
2x CEE sockets 230 V, 16 A, 3-pole



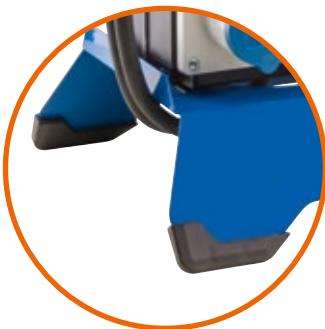
EAN

4011160608698

Art. no.

60860

Details overview:



Powder-coated metal frame with edge protection, for use as cable revider



Ergonomic carry handle, ideal for gripping with gloves. Velcro fastener for easily fixing the cable to the frame



STECKY DUO with 2 USB-Ports to recharge mobile phones, handlamp batteries etc.

STECKY DUO CEE power combination units

Technical data

- Robust housing made from shatterproof special plastic
- With large, ergonomic carry handle
- Tested in accordance with DIN VDE 0620-2-1, IEC 60309, EN 61439-4, DIN EN 50525-2
- **IP44**: resistant to foreign bodies and splash-proof



STECKY DUO 5

- 3.4 m H07RN-F 3G2.5 heavy-duty rubber power cable with CEE plug 230 V, 16 A
- Dimensions (W x H x D): 400 x 450 x 252 mm
- With protective device 1x FI 25 A, 30 mA, type A

Input 16 A, approx. 3.5 kW

Output

EAN

Art. no.

CEE plug 230 V, 16 A, 3-pole



7x shock-proof socket outlets 230 V, 16 A

4011160609350

60935

4x CEE sockets 230 V, 16 A, 3-pole

2x USB ports 5 V / 2.1 A



STECKY DUO 8

- 3.4 m H07RN-F 5G2.5 heavy-duty rubber power cable with CEE plug 400 V, 16 A
- Dimensions (W x H x D): 400 x 450 x 252 mm
- With protective device 1x FI 40 A, 30 mA, type A

Input 16 A, approx. 11 kW

Output

EAN

Art. no.

CEE plug 400 V, 16 A, 5-pole



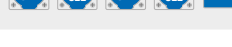
7x shock-proof socket outlets 230 V, 16 A

4011160609381

60938

4x CEE sockets 230 V, 16 A, 3-pole

2x USB ports 5 V / 2.1 A



CEE plugs

Technical data

- High-quality plug with impact-resistant housing
- Cable receptacle up to 3G2.5
- Tested in accordance with IEC 60309
- **IP44**: protected against foreign bodies and splash-proof



CEE plugs with 'powerlight' voltage indicator



- High-quality plug with 'powerlight' voltage indicator: The LED glows red when the plug is connected to the power and is live.
- Cable receptacle with screw cap and cable sleeve support
- Lug for fixing the plug connection in place prevents the connection from accidentally pulling apart.

Version	PU	EAN	Art. no.
'powerlight' CEE plug 230 V, 16 A, 3-pole	1	4059948004737	61486

CEE plugs



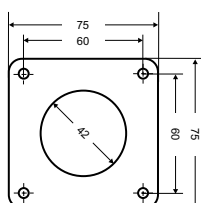
Version	PU	EAN	Art. no.
CEE plug 230 V, 16 A , 3-pole	5	4011160604706	60470
CEE plug 230 V, 32 A , 3-pole	1	4011160605901	60590



Version	PU	EAN	Art. no.
CEE angled plug 230 V, 16 A, 3-pole	1	4011160614811	61481



Version	PU	EAN	Art. no.
CEE wall-mounted inlet 230 V, 16 A, 3-pole	5	4011160604737	60473



- Flange dimension (HxW) in mm: 75x75
- Hole spacing (HxW) in mm: 60x60
- Mounting depth in mm: 33

Version	PU	EAN	Art. no.
CEE panel-mounted socket 230 V, 16 A, 3-pole	1	4011160610141	61014

CEE connectors



Technical data

- High-quality connectors with impact-resistant housing
- Cable receptacle up to 3G2.5
- Tested in accordance with IEC 60309
- **IP44**: protected against foreign bodies and splash-proof

CEE connector with 'powerlight' voltage indicator



- High-quality connectors with 'powerlight' voltage indicator:
The LED glows red when the connector is connected to the power and is live.
- With self-closing flap lid and integrated level for opening with one hand
- Cable receptacle with screw cap and cable sleeve support

Version	PU	EAN	Art. no.
'powerlight' CEE connector 230 V, 16 A, 3-pole	1	4059948004720	61487

CEE connectors



Version	PU	EAN	Art. no.
CEE connector 230 V, 16 A , 3-pole	5	4011160604713	60471
CEE connector 230 V, 32 A , 3-pole	1	4011160605925	60592



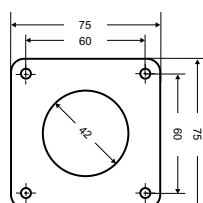
Version	PU	EAN	Art. no.
CEE angled connector 230 V, 16 A, 3-pole With self-locking flap lid	5	4011160604751	60475



Version	PU	EAN	Art. no.
CEE angled connector 230 V, 16 A, 3-pole With integrated shock-proof socket outlet	5	4011160604744	60474



Version	PU	EAN	Art. no.
CEE wall-mounted socket outlet 230 V, 16 A, 3-pole	5	4011160604720	60472



- Flange size (HxW) in mm: 75x75
- Hole spacing (HxW) in mm: 60x60
- Mounting depth in mm: 33

Version	PU	EAN	Art. no.
CEE panel-mounted socket outlet 230 V, 16 A, 3-pole	1	4011160604805	60480

CEE caravan power supply inlets

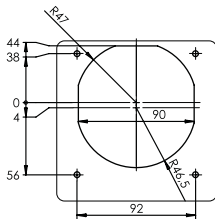
Technical data

- High quality power inlet for self-assembly
- CEE 230 V, 16 A, 3-pole
- Tested in accordance with IEC 60309
- **IP44:** protected against foreign bodies and splash-proof



CEE caravan power supply inlets

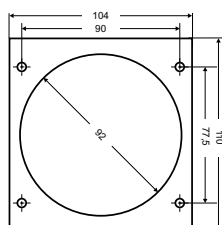
NEW



- Housing in elegant design **with magnetic closure**
- CEE power supply inlet 230 V, 16 A, 3-pole with flap lid
- All visible parts made of UV-proof plastic
- Lid opening angle: 180°
- Flap lid with magnetic closure
- High fire protection class 850°C, self-extinguishing plastic
- Large connection space
- Self-opening safety latch (CEE connector)
- Low installation height
- Flange dimension (HxW) in mm: 145x130
- Hole spacing (HxW) in mm: 94x92
- Installation depth in mm: 82

Colour	PU	EAN	Art. no.
White	1	4011160624704	62470
Black	1	4011160624711	62471
Anthracite grey	1	4011160624728	62472

**BEST
SELLER**



- CEE power supply inlet 230 V, 16 A, 3-pole **with flap lid**
- Flange size (HxW) in mm: 110x104
- Hole spacing (HxW) in mm: 90x77.5
- Mounting depth in mm: 82

Colour	PU	EAN	Art. no.
White	1	4011160604843	60484
Anthracite grey	1	4011160614927	61492
Black	1	4011160614934	61493

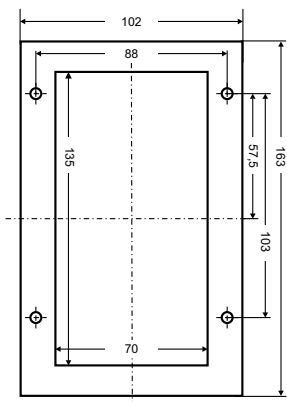
CEE caravan power supply inlets

Technical data

- High quality power inlet for self-assembly
- CEE 230 V, 16 A, 3-pole
- Tested in accordance with IEC 60309
- **IP44**: protected against foreign bodies and splash-proof

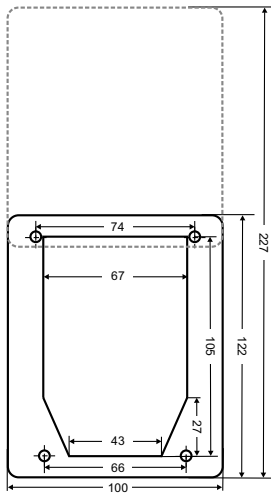


CEE caravan power supply inlets



- Foldable CEE power supply inlet 230 V, 16 A, 3-pole **with flap lid**
- Flange dimension (HxW) in mm (closed): 163x102
- Hole spacing (HxW) in mm: 103x88
- Mounting depth in mm: 62

Colour	PU	EAN	Art. no.
White	1	4011160614637	61463



- CEE power supply inlet 230 V, 16 A, 3-pole **with sliding lid**
- Flange dimension (HxW) in mm (closed): 112x100
- Flange dimension (HxW) in mm (open): 227x100
- Hole spacing (HxW) in mm: 74/66x105
- Mounting depth in mm: 119

Colour	PU	EAN	Art. no.
White	1	4011160614804	61480
Black	1	4011160614620	61462

MULTI-FUNCTION FLANGED SOCKET

NEW

12 V DC
socket

Shock-proof socket outlet
with flap lid

2x
SAT sockets



Multi-function flanged socket



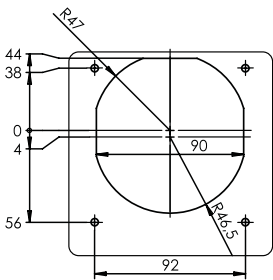
Technical data

- High-quality flanged socket for self-assembly
- Tested in accordance with DIN VDE 0620
- **IP44:** protected against foreign bodies and splash-proof



NEW

- Multi-function flanged socket in elegant design
- Flap lid with magnetic closure
- Lid opening angle: 180°
- All visible parts made of UV-proof plastic
- High fire protection class 850°C, self-extinguishing plastic
- Connections:
 - 1x shock-proof socket outlet 230 V, 16 A, with flap lid,
 - 2x SAT sockets,
 - 1x 12 V DC socket
- With large connection space
- Low installation height
- Flange dimension (HxW) in mm: 145x130
- Hole spacing (HxW) in mm: 94x92
- Installation depth in mm: 66



Colour	PU	EAN	Art. no.
White	1	4011160624735	62473
Black	1	4011160624742	62474
Anthracite grey	1	4011160624759	62475

Plugs and connectors



- For self-assembly
- Cable receptacle up to 3G1.5
- **IP20**: suitable for indoor use

Versions for indoor use

	PU	EAN	Art. no.
PVC shock-proof plug 230 V, 16 A, black	1	4011160622229	62222
PVC shock-proof connector 230 V, 16 A, black	1	4011160622250	62225



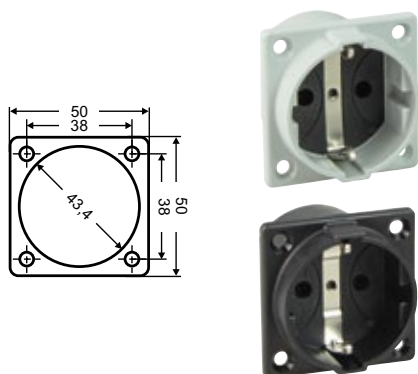
**BEST
SELLER**

- For self-assembly
- Cable receptacle up to 3G2.5
- **IP44**: suitable for outdoor use

Version

	PU	EAN	Art. no.
Rubber shock-proof plug 230 V, 16 A, black	1	4011160604102	60410
Rubber shock-proof connector 230 V, 16 A, black	1	4011160604157	60415

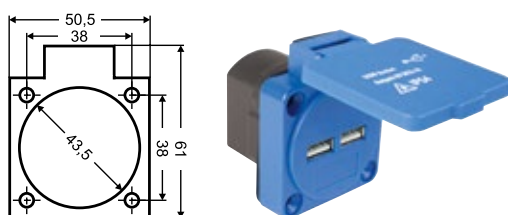
Flanged sockets



- Flange dimension (HxW) in mm: 50x50
- Hole spacing (HxW) in mm: 38x38
- Mounting depth in mm: 28
- **IP20**: suitable for indoor use

Versions for indoor use

	PU	EAN	Art. no.
Shock-proof socket outlet 230 V, 16 A, grey	1	4011160450846	45084
Shock-proof socket outlet 230 V, 16 A, black	1	4011160450815	45081



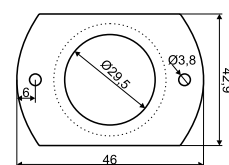
- 2 USB socket 5 V/2.1 A DC
- Flange dimension (HxW) in mm: 61x50.5
- Hole spacing (HxW) in mm: 38x38
- Mounting depth in mm: 34
- **IP54**: suitable for outdoor use

Version 230 V

	PU	EAN	Art. no.
USB flanged socket with two USB ports, blue	1	4011160450891	45089



- Delivery including 0.6 m connecting wires with built-in fuse
- 2 USB sockets 1x 5 V/1 A and 1x 5 V/2.1 A
- with protective cap
- Flange size (HxW) in mm: 43x61
- Hole spacing in mm: 48
- Installation depth in mm: 34
- **IP20**: suitable for indoor use



Version 12 V

	PU	EAN	Art. no.
USB flanged socket with two USB ports, white	1	4011160614644	61464
USB flanged socket with twin USB socket, black	1	4011160614996	61499

Protective devices and cables



- Miniature circuit breaker in a white ABS housing
- For caravan wall-mounting
- Dimensions (HxWxD) in mm: 131x50x80
- MCB switching on 2 poles, 230 V/10 A with LS C10 A, 2-pole

Version	PU	EAN	Art. no.
MCB 10 A, C-curve	1	4011160615641	61564



- Residual Current Device in a white ABS housing
- For caravan wall-mounting
- Dimensions (HxWxD) in mm: 131x50x80
- FI 25 A, 30 mA, 2-pole, type A

Version	PU	EAN	Art. no.
RCD	1	4011160615658	61565

Power cords

- For the wiring of caravans, trailers and motorhomes



Version	Colour	PU	EAN	Art. no.
Linear metre PVC cable H05VV-F 7x1.0	Black	1	4011160708992	70899
2 m PVC cable H05VV-F 7x1.0	Black	1	4011160718922	71892
5 m PVC cable H05VV-F 7x1.0	Black	1	4011160718953	71895
10 m PVC cable H05VV-F 7x1.0	Black	1	4011160718908	71890
5 m H07V-K 1.5 mm ²	Blue	1	4011160300400	30040
5 m H07V-K 2.5 mm ²	Blue	1	4011160300424	30042
5 m H07V-K 6.0 mm ²	Blue	1	4011160300455	30045
5 m H07V-K 1.5 mm ²	Red	1	4011160300417	30041
5 m H07V-K 2.5 mm ²	Red	1	4011160300431	30043
5 m H07V-K 6.0 mm ²	Red	1	4011160300448	30044
5 m PVC twin cable H03VH-H 2x0.75 mm ²	White	1	4011160300509	30050
Linear metre heavy-duty rubber power cable H07RN-F 3G2.5	Black	1	4011160100185	10018
50 m heavy-duty rubber power cable H07RN-F 3G2.5	Black	1	4011160100208	10020

Caravan adapters

We have the solution!

The problem: Your trailer socket has a 13-pole connection but your trailer has a 7-pole connection?

The solution: With our plugs, connectors, and adapters, you can connect all common connections to your trailer socket.



Caravan adapters



- Connection of 13-pole sockets to 7-pole trailer plug adapter
- No need for dragging cables any longer.

Version	PU	EAN	Art. no.
Universal short adapter	1	4011160604690	60469



- Connection of the 13-pole sockets to 7-pole trailer plug adapter.
- No need for dragging cables any longer.

Version	PU	EAN	Art. no.
Universal mini adapter	1	4011160604393	60439

1



- Round, with flap lid and contact for rear fog light
- For mounting

Fig.	Version	PU	EAN	Art. no.
1	13-pole panel-mounted socket	1	4011160614743	61474
2	7-pole panel-mounted socket	1	4011160614736	61473

2



1



- Connects trailer road lights to towing vehicle
- With screw connection for cable diameters from 8.5 to 10 mm
- Designed in accordance with DIN ISO 1724

Fig.	Version	PU	EAN	Art. no.
1	Plug 7-pole	1	4011160604621	60462
2	Plug 13-pole	1	4011160604645	60464

2



1



- Connects trailer road lights to towing vehicle
- With screw connection for cable diameters from 8.5 to 10 mm
- Designed in accordance with DIN ISO 1724

Fig.	Version	PU	EAN	Art. no.
1	Connector 7-pole	1	4011160604638	60463
2	Connector 13-pole	1	4011160604669	60466

2





Caravan adapter cords



Caravan adapter cords



- With a 0.6 m automotive PVC cable 7×1 mm²

Fig.	Version	PU	EAN	Art. no.
1	7-pole connector and 13-pole plug	1	4011160604676	60467
2	13-pole connector and 7-pole plug	1	4011160604683	60468



- With 1 m automotive PVC cable 7×1

Version	PU	EAN	Art. no.
Retractable spiral lead to connect 13-pole plug to 7-pole socket	1	4011160614750	61475



- With 2 m automotive PVC cable 7×1

Version	PU	EAN	Art. no.
7-pole connector and 7-pole plug	1	4011160614767	61476



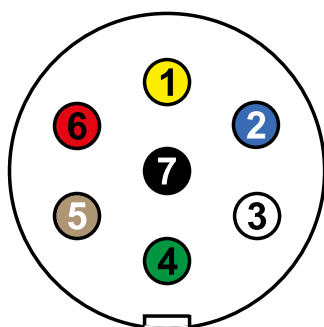
7-pole socket caravan circuit tester



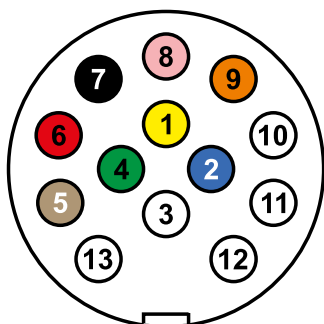
- Testing of the wiring circuits on the car or trailer
- Handy test device for finding cable line defects
- LED Indicators will show green when function is tested and correctly wired, or red if a fault is present
- Applicable for all 7-pole plugs and connectors
- Internal battery supply, no external power source necessary
- Operation with 9 V battery (not included)

Version	PU	EAN	Art. no.
7-pole socket caravan circuit tester	1	4011160614729	61472

Socket wiring diagram



7-pole (socket)



13-pole (socket)

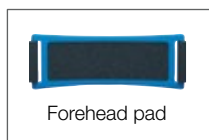
Sockets mirror-inverted

PIN number	Label	Colour	7-pole	13-pole
1	L	Yellow	Left turn	Left turn
2	54g	Blue	Fog light	Fog light
3	31	White	Earth	Earth
4	R	Green	Right turn	Right turn
5	58R	Brown	Right tail/side light	Right tail/side light
6	54	Red	Brake/stop lights	Brake/stop lights
7	58L	Black	Left tail/side light	Left tail/side light
8	ZR	Grey/pink		Reversing light
9	30	Brown/blue Orange		12 V permanent from batt.
10				12 V ignition on
11				Spare
12				Spare
13	31	Black/white White/red		Earth

Battery-operated LED headlamp HD 150



Size-adjustable headband



Forehead pad

- Powerful LED with a lifespan of over 50,000 hours
- Luminous intensity adjustable in two levels, with on/off switch
- With size-adjustable headband and forehead pad
- Li-poly storage battery 3.7 V/800 mAh with charge status display
- Charging time: approx. 3 hours
- Operating time: up to 4 hours
- Includes USB charger 5 V/1 A

Version	Colour temperature	PU	EAN	Art. no.
2 watt approx. 75/150 lumen	6,000 K (daylight)	1	4011160428234	42823

LED torch XT1



110 mm

- Powerful LED in a robust die-cast aluminium housing
- 2 illumination levels and emergency flashing function
- Operating time at full output: approx. 6 hours
- Operating time at half output: approx. 10 hours
- Operating time using emergency flashing function: approx. 12 hours
- Includes 3 x AAA batteries

Version	Colour temperature	PU	EAN	Art. no.
1 watt approx. 70-110 Lumen	6,400 K (daylight)	1	4011160428043	42804

Battery-operated LED handlamp



280 mm

- Special LED beam and 3 additional LEDs in the lamp head
- Rubber-coated housing with folding hook for suspending
- 4 magnets on rear
- Li-ion battery 3.7 V/2,000 mAh with charge status display
- Charging time: approx. 3 hours
- Operating time: up to 4 hours
- Includes USB charger (5 V/1 A)
- 3 positions possible: ON - lamp head only - OFF

Version	Colour temperature	PU	EAN	Art. no.
2 watt approx. 200/20 Lumen	6,000 K (daylight)	1	4011160428203	42820

Solarline LED floodlight with motion sensor



- Swivelling, lockable floodlight with die-cast aluminium housing
- Motion sensor: Sensor 180°
- Detection zone: up to 12 metres
- Adjustable from 10 seconds to 6 minutes
- Adjustable twilight and sensitivity switch
- Solar panel (3.5 W/14.5 V) with Li-ion battery (7.4 V/1,800 mAh)
- Charging time: approx. 10 hours
- Operating time: approx. 4 hours
- 3 m connecting cable between light and solar panel

Version	Colour temperature	PU	EAN	Art. no.
10 watt approx. 550 Lumen	5,000 K (neutral white)	1	4011160469787	46978

Order form

[illegible]

Company: _____

Postal code, town: _____

First name: _____

Telephone: _____

Surname: _____

Fax: _____

Street: _____

Email: _____

Date, place: _____

Signature: _____

Company stamp

Adapter
Art. no. 60494

25 m extension cable
Art. no. 61409

Adapter cord
Art. no. 61406

Energy meter
Art. no. 61748

Cable reel
Art. no. 22176

STECKY power combination unit
Art. no. 60869

Cable reel
Art. no. 12270

Multi socket outlet
Art. no. 38605

Extension cable
Art. no. 61403

Wall-mounted socket outlet
Art. no. 60472

MIXO EMS power combination unit
Art. no. 60496

Cable reel
Art. no. 12274

Bag for cable reels
Art. no. 12279

Cable reel
Art. no. 10176

STECKY DUO power combination unit
Art. no. 60935

The right power supply for
CAMPING • CARAVAN • MARINA

SIMPLY DROP ANCHOR AT YOUR FAVOURITE SPOT



ENJOY THE MOMENT ON BOARD AS WELL – WITH THE RIGHT POWER SUPPLY FROM AS-SCHWABE

During stays in port and at the shipyard, use our products to supply the onboard power system via shore power.

We provide:

- Plugs and connectors **approved for** shore power connection
- **CEE 230 V plugs and connectors** protected against moisture
- **Standard-compliant cords** with 2.5 mm² cross-section
- **Adapters** for connecting electrical devices to the power supply
- **Multiple socket outlets** for connecting various loads to one socket



More products inside

Your partner for professional lighting and electrical products

#68, as at 4/2021. Errors and modifications reserved. Reproduction only with the authorisation of as - Schwabe GmbH.
as - Schwabe GmbH, Merkurstraße 10, 72184 Eutingen, Germany, Tel. +49 7457 9 48 53 10, d.mueck@as-schwabe.de, www.as-schwabe.de

as[®]
Schwabe
TechnikProdukte